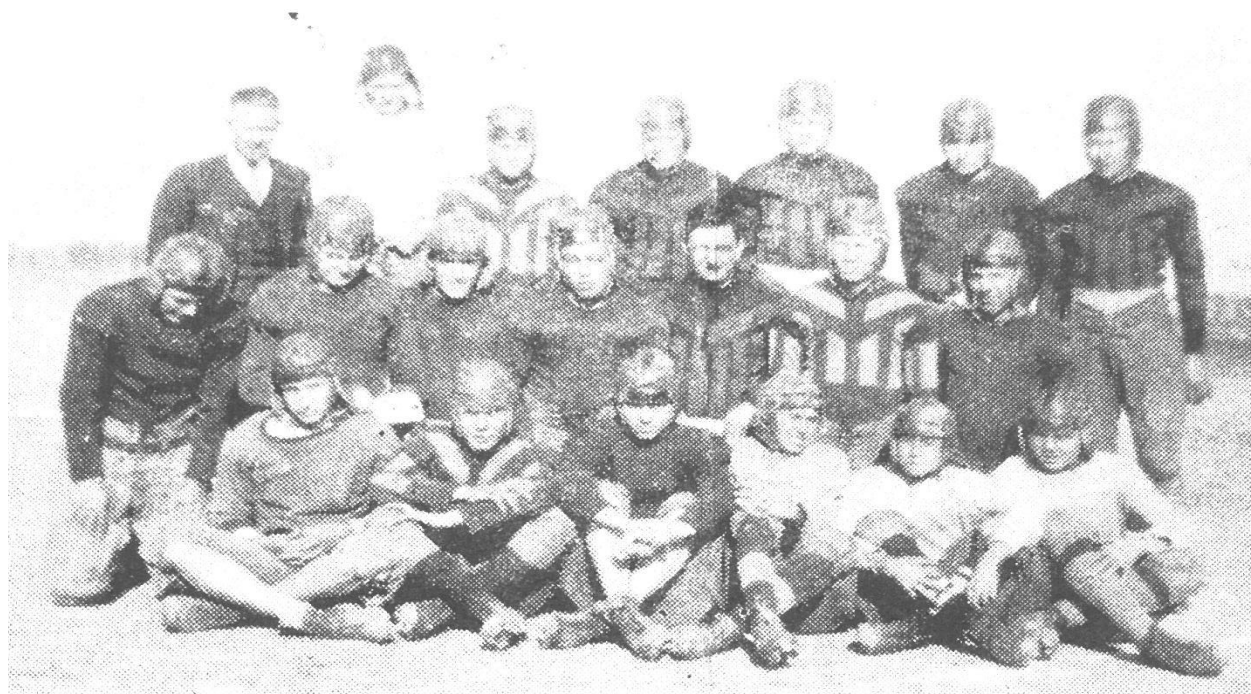


# Continental 1930 2 - 4 - 1



Sitting left to right - Loyal Rockhold, Bob Hastings, George Gordon, George Dickey Oscar Rayle and LaVoid Wagner. Kneeling - Cecil Kirkendall, Ed Fensler, Carl Reynolds, Clarence Friend, Van Riggs, Henry Wiemer and Harold Hammons. Standing - Coach Ralph McKibben Clovicee Winchester, Don A. Myers, Captain Gerald Bibler, Charles Bird, Ford Rhees and Bob Lucas.

According to Bob Lucas, a member of those last teams, there had been an unusual number of injuries during the 1930 and 1931 seasons - broken bones, dislocations, sprains, lacerations and contusions. It sounded as if they were getting their brains beat out. Parents and school staff prevailed upon the school board, after the 1931 season, to drop football.

We must remember that by modern standards, protective equipment was skimpy and the rules were more lax. Either or both of these factors could contribute to a high injury rate.

If you like sports trivia, try this one on some old Continental schoolmate - Who both played on the first C.H.S football team and coached the last one? - Ralph McKibben

Continental 2 - 4 - 1					
Coach Ralph McKibben					
C	Opponents		C	Opponents	
6	Ottawa SPPS	18	0	Leipsic	9
0	Pandora	7	6	Oakwood	0
0	Shawnee	18	30	Columbus Grove	6
0	Alumni	0			